



## Kross

会议桌两个翻转线盒，分别放置在桌面的两个半区，迎合现代科技会议需求。  
桌下箱体既方便走线，也能起到支撑桌体的作用。

With two flip cable box in the left and right side accordingly, to meet the modern scientific meeting requirement.  
The under desk whole cable box, not only can make the electricity walking way more convenient, but also can have the function of supporting the desk.

打破传统的单一空间分割方式，将家居设计元素融入文件柜，结合立式衣柜和书架，打造错落有致，刚柔并济的办公空间。

Break the traditional room section way, melt the home furniture design element into file cabinet, combine with the vertical closet and bookshelf, to create a well-proportioned and flexible office room.



### Executive Table



EA88大班台  
3480(W)×2380(D)×760(H)  
3280(W)×2380(D)×760(H)  
3060(W)×2380(D)×760(H)  
2860(W)×2380(D)×760(H)



EA87中班台  
2600(W)×1850(D)×760(H)  
2400(W)×1850(D)×760(H)  
2200(W)×1800(D)×760(H)  
2000(W)×1800(D)×760(H)



EA86小班台  
2400(W)×1000(D)×760(H)  
2200(W)×1000(D)×760(H)  
2000(W)×900(D)×760(H)  
1800(W)×900(D)×760(H)

### Meeting Table



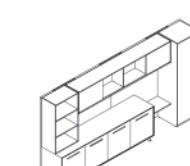
EA78会议桌  
4600(W)×1600(D)×760(H)  
3600(W)×1600(D)×760(H)  
3000(W)×1400(D)×760(H)  
2400(W)×1200(D)×760(H)

### Meeting Table

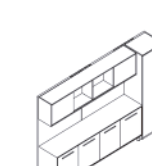


EA70洽谈桌  
∅1000×760

### Cabinet



EA98文件柜  
3600(W)×560(D)×1920(H)



EA97文件柜  
3000(W)×560(D)×1920(H)  
2700(W)×560(D)×1920(H)  
2400(W)×560(D)×1920(H)  
2100(W)×560(D)×1920(H)



EA96矮柜  
2400(W)×520(D)×800(H)  
1800(W)×520(D)×800(H)



EA27长柜  
1110(W)×560(D)×619(H)



EA25短柜  
574(W)×560(D)×619(H)

### Tea Table



EA11茶几  
700(W)×700(D)×420(H)



EA11茶几  
1380(W)×700(D)×420(H)

### Material



W-8A枫木色 Maple



W-1B胡桃木色 Walnut



白色抗菌漆 White Anti-bacterial Paints

## Sunon 圣奥

## Sunon 圣奥



Kross



- 1、钢化玻璃侧台
- 2、翻转式线盒
- 3、镂空钢制下脚
- 4、班台侧柜采用多折面边型设计，内置电脑主机位及实木指接板抽屉。

Tempering glass side desk.  
Flip over cable box.  
Hollow out steel legs.  
The side cabinet of executive desk is applied with multi-fold edge design and equipped with built-in CPU place and solid wood drawer.



## Kross

风尚跨界 灵感诠释  
打破传统办公家具元素，重组后寻求新的贴合。Kross 侧柜的折边处理，镂空的钢制下脚等，渗透着解构主义的设计理念。  
执著于跨界混搭的 Kross，表现出更多设计灵感。既有金属、木制、玻璃材质的糅合，也有家居化设计的融入。

Cross-boundary vogue, inspiration interpretation.  
Break the traditional office furniture element, finding new joint after recombination. Multi-fold craft and hollow out metal legs of Kross side cabinet, penetrating the deconstruction design idea.  
Kross insists on cross-boundary combination, showing more design inspiration. Including both metal, wood, and glass, also with home furniture design.

EA86 独立桌，可选配活动长柜、推柜。  
EA86 independent desk, optional mobile cabinet.



EA87 主管桌拥有多种尺寸选择，满足不同大小的空间需求。  
EA87 executive desk has several optional dimensions, to meet different room size requirements.

